

MobiRake 2000

lite Outdoor Subscriber

Quick Installation Guide

Version 1.0.4



Jun. 2013

WARNINGS



In order to comply with international radio frequency (RF) exposure limits, dish antennas should be laced at a minimum of 8.7 inches (22 cm) from the bodies of all persons. Other antennas should be laced a minimum of 7.9 inches (20 cm) from the bodies of all persons.



Do not work on the system or connect or disconnect cables during periods of lightning activity.



Ultimate disposal of this product should be handled according to all national laws and regulations.



Do not locate the radio near overhead power lines or other electric light or power circuits, or where it can come into contact with such circuits. When installing the antenna, take extreme care not to come into contact with such circuits, as they may cause serious injury or death. For proper installation please refer to national and local codes (e.g. U.S.:NFPA 70, National Electrical Code, Article 810, in Canada: Canadian Electrical Code, Section 54).



Only trained and qualified personnel should be allowed to install, replace, or service this equipment. Follow the guidelines in this installation guide to ensure correct operation and safe use of the radio.



The outdoor radio and POE injector can be damaged by incorrect power application. Read and follow the installation instructions carefully before connecting the system to its power source.

■ PACKAGE CONTENTS

The package you have received should contain the following items:

- Lite Outdoor Subscriber.....x1
- PoE Injector.x1
- AC Power Codex1
- Power adaptor.....x1
- Mounting Kitx1
- Product CD.....x1
- Quick Installation Guide.....x1



If any item on the above list is not included or damaged, please contact your local vendor for support.

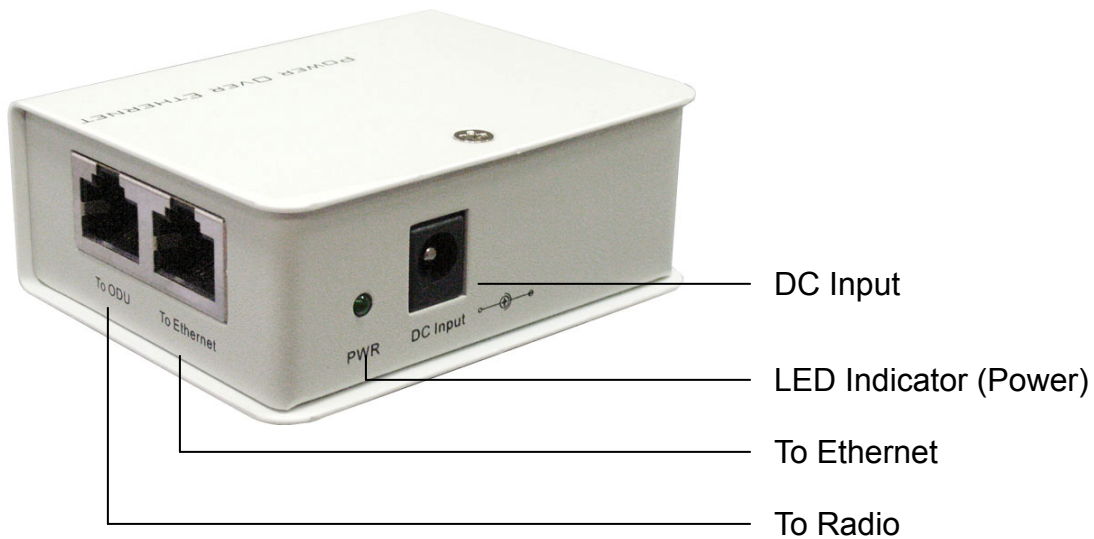
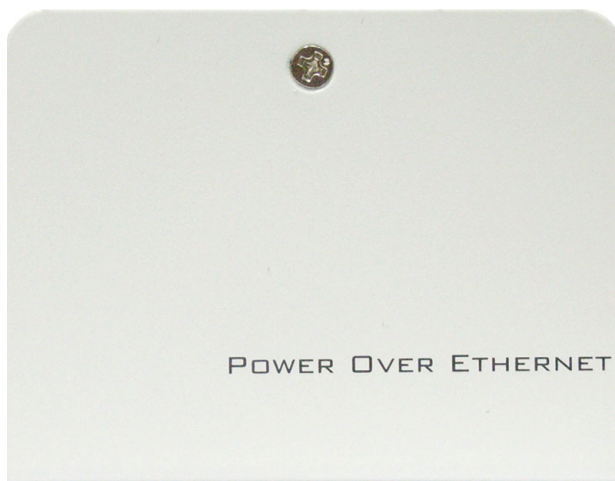
■ MECHANICAL DESCRIPTION

Please refer to the following table for the meaning of each feature.



Lite Outdoor Subscriber Figure

1	RJ-45 Port	Use the SFTP or UTP cat.5 cable with weatherproof connector to connect to the “To ODU” side of the POE injector.
---	-------------------	--



Power Over Ethernet Injector Figure

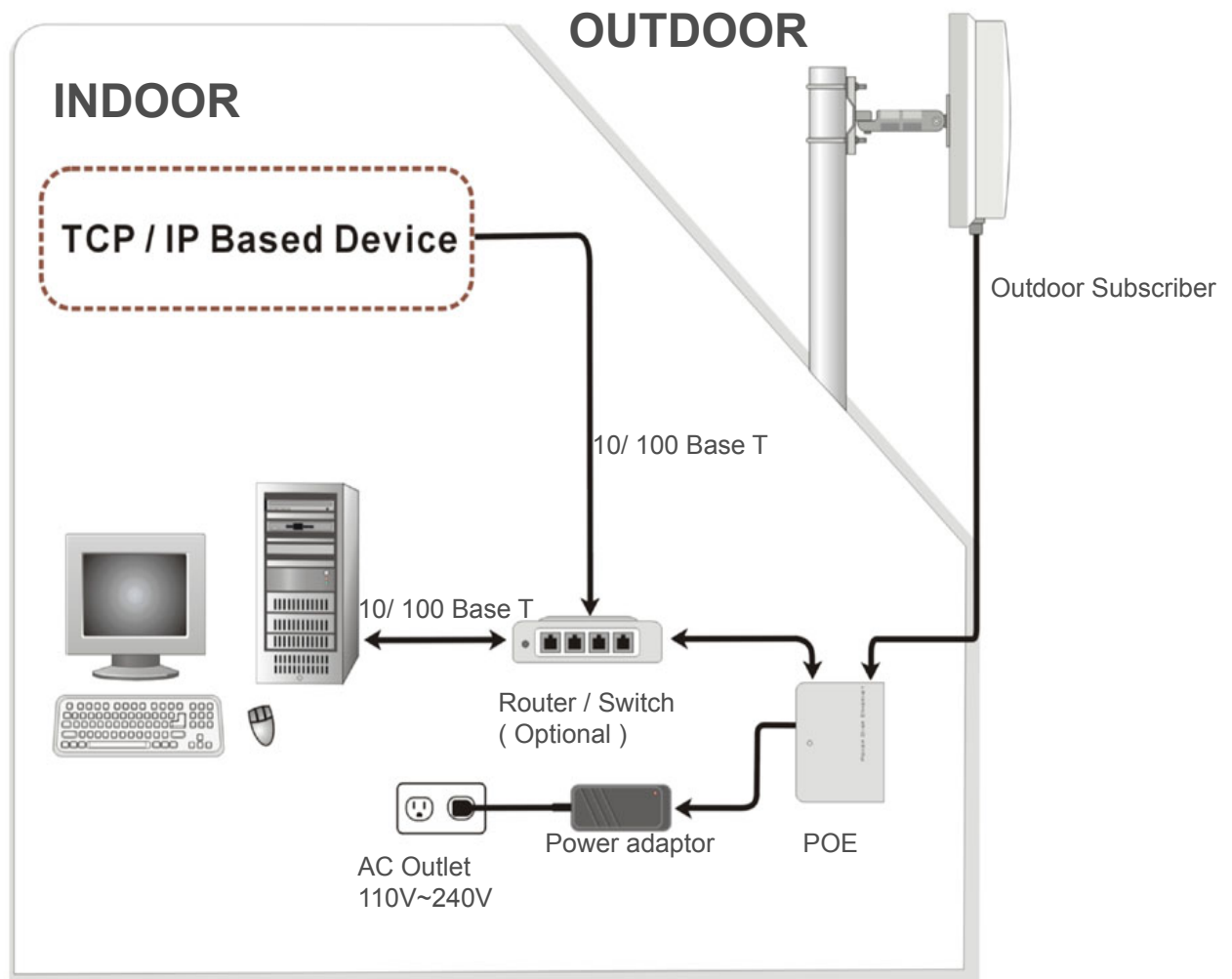
1	To Ethernet	This RJ-45 port is used to connect to the 10/100 Base T complied device such as switch, router or PC.
2	To ODU	This RJ-45 port is used to connect to the ODU.
3	DC Input	Connect to the Power adaptor for DC input.
4	LED Indicator	Power LED



Power Over Ethernet Injector is not waterproof unit, should not be exposed to the outdoor without any protection.

■ INSTALL THE LITE Outdoor Subscriber

This section show you how to mount the Lite Outdoor subscriber, please read it carefully before you start to install the hardware. Be safe and step by step to finish the hardware installation.



Hardware Installation Figure



The outdoor radio and power injector can be damaged by incorrect power application. Read and follow the installation instructions carefully before connecting the system to its power source.

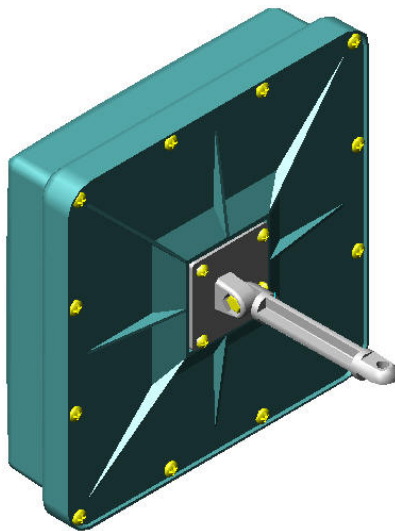
1. Mounting the Outdoor Radio

There are two ways to mount the Lite Outdoor Subscriber:

- Mount the radio on the pole
- Mount the radio on the wall

Follow the next steps to mount the Lite Outdoor Subscriber.

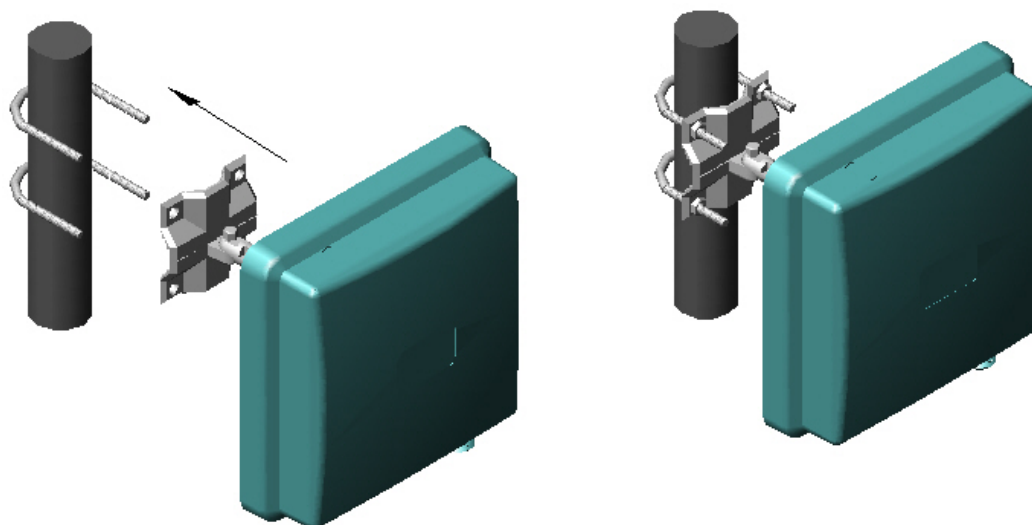
- i. Mount the enclosure bracket to the back of the outdoor radio.
- ii. Mount the pole / wall bracket to the enclosure bracket.
- iii. Mount the whole set to the pole with U-bolts and supplied screws
- iv. Or mount the whole set on the wall with supplied screws for wall mounting.
- v. Tighten the all the screws, U-bolts, washers and nuts with hand tools.



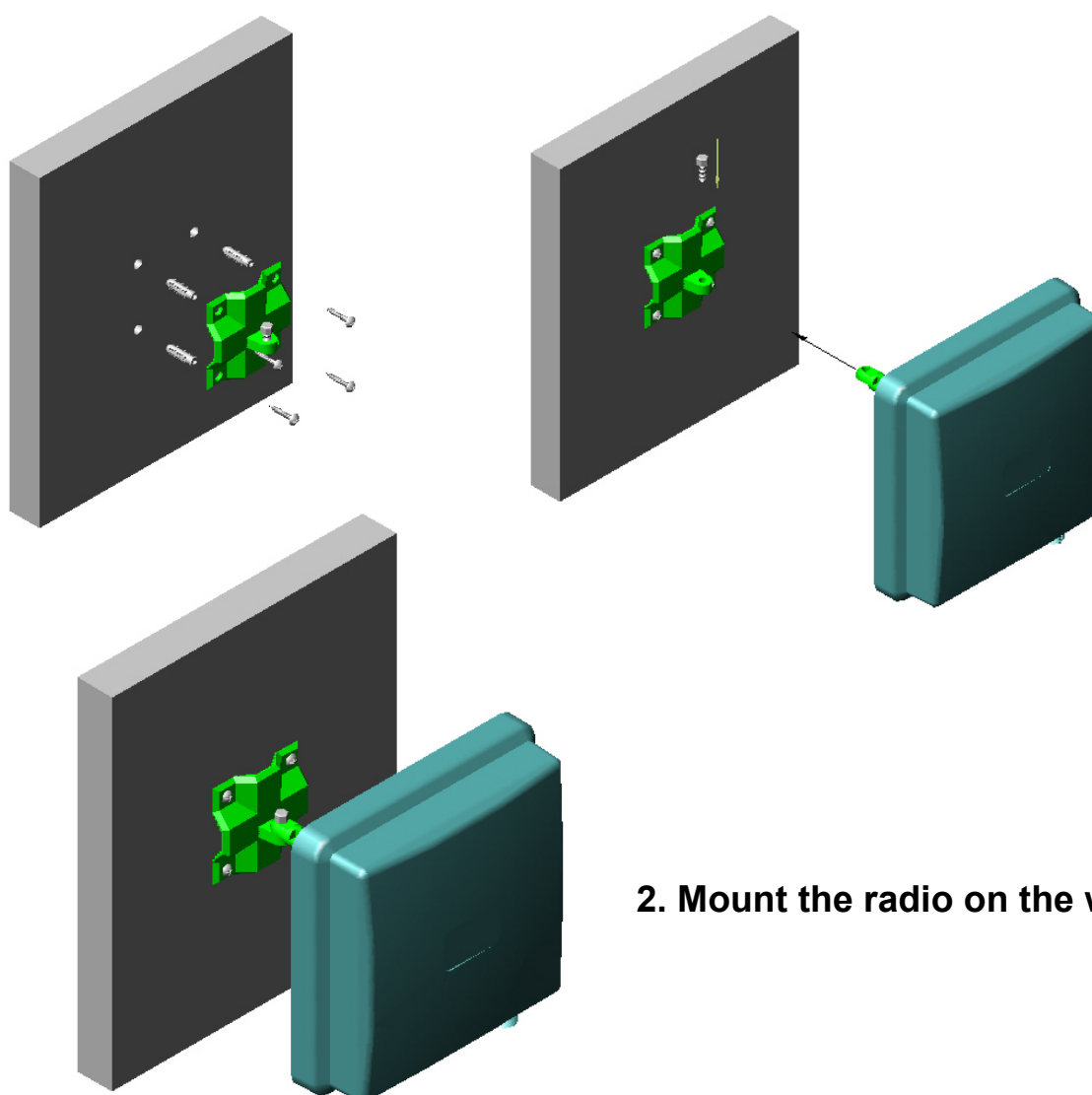
Mounting Assembly Figure



Only trained and qualified personnel should be allowed to install, replace, or service this equipment.



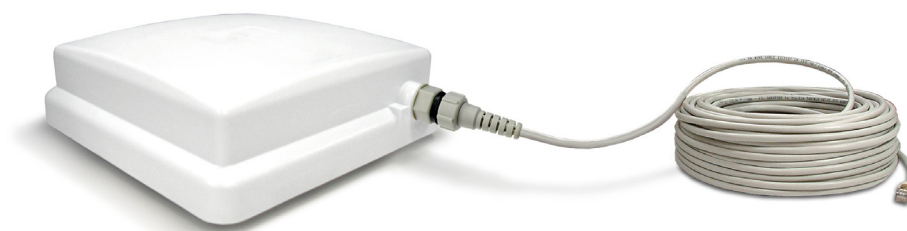
1. Mount the radio on the pole



2. Mount the radio on the wall

2. Connect the Ethernet Cable

The Lite Outdoor Subscriber support 10/100M Ethernet connection. Attach your SFTP or UTP cat.5 Ethernet cable with waterproof connector to the RJ-45 connector on the ODU enclosure. Then connect the other end of the cable to the “To ODU” side on PoE injector.



Connect the SFTP / UTP cable to the Lite Outdoor Subscriber

3. Connect the Power Cable

Connect the power adapter to the POE injector, and plug the other end of the electrical outlet (AC 110V~240V).

The polar of the circle connector is: 



We cannot assume the responsibility for the damage from using with the other power adapter supplier.



You should read and follow the installation instructions carefully before connecting the system to its power source. The radio and power injector can be damaged by incorrect power application.



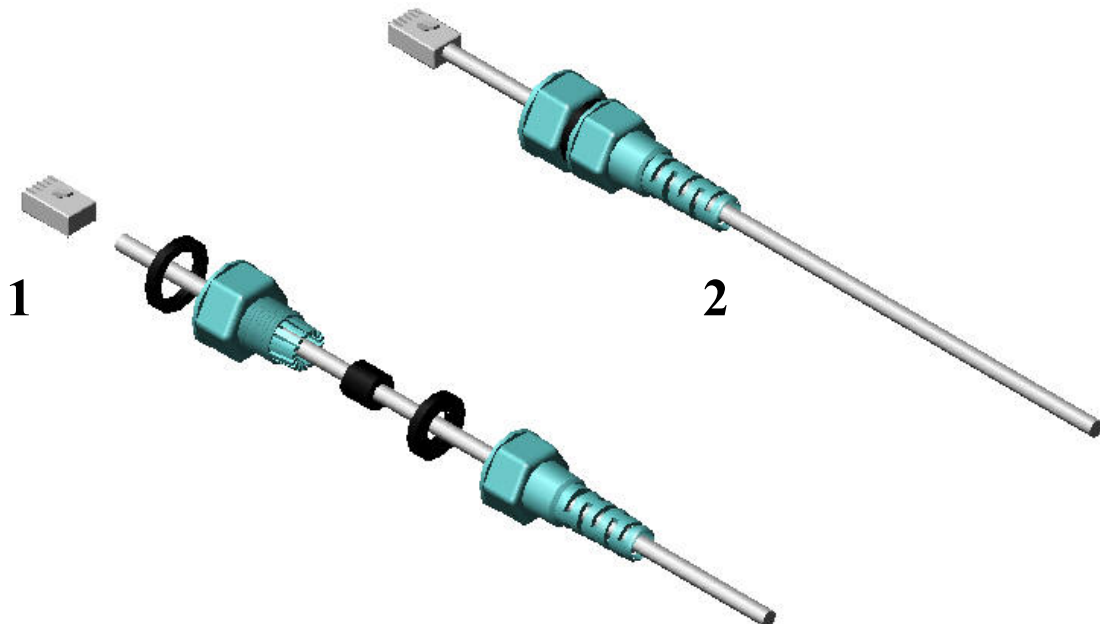
Wind the water-resistant adhesive tape around the RJ-45 connector on the outdoor radio as the last step of the hardware installation procedures.

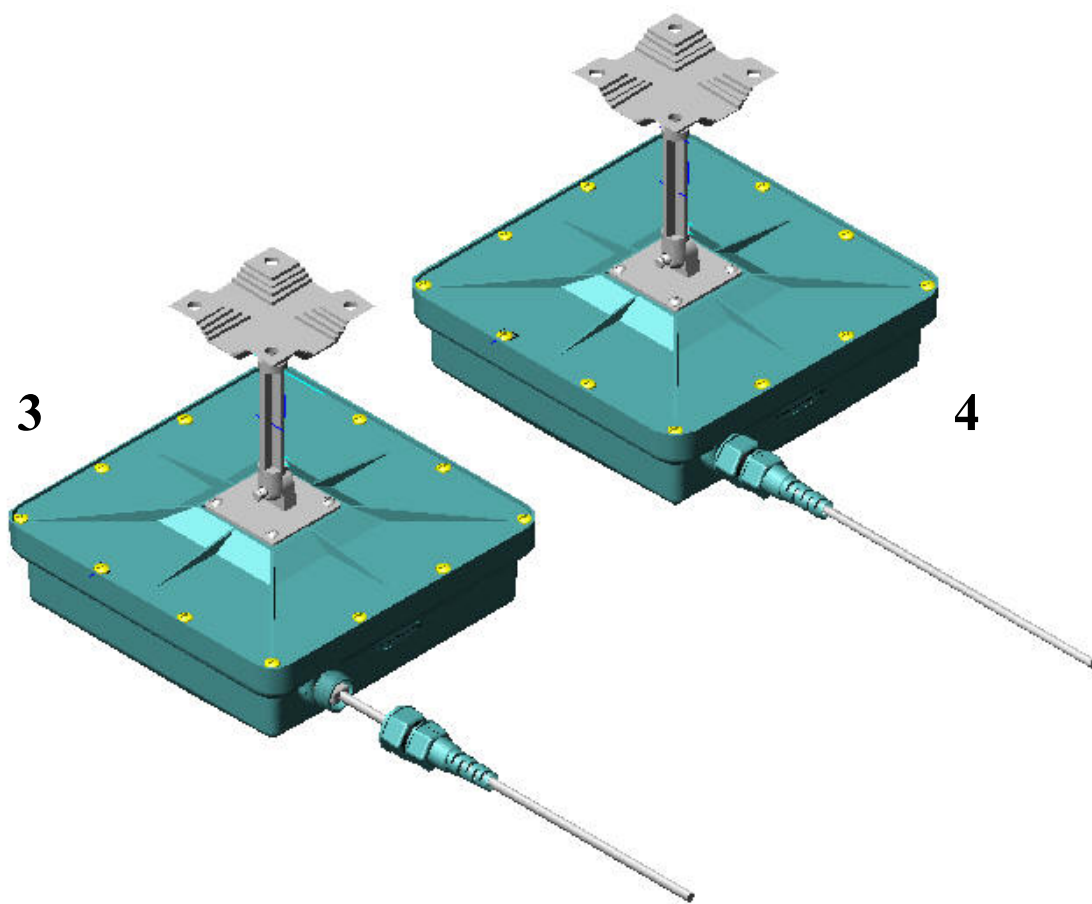
Appendix 1 — How to make the SFTP cable with waterproof connector between the radio and POE injector.

The waterproof connector was formed by 5 pieces components



Please see the following exploded view and assembling procedure for your reference:





Wind the water-resistant adhesive tape around the RJ-45 connector on the outdoor radio as the last step of the hardware installation procedures.
