

WiMy - Myriaplex wireless IPTV broadcast system

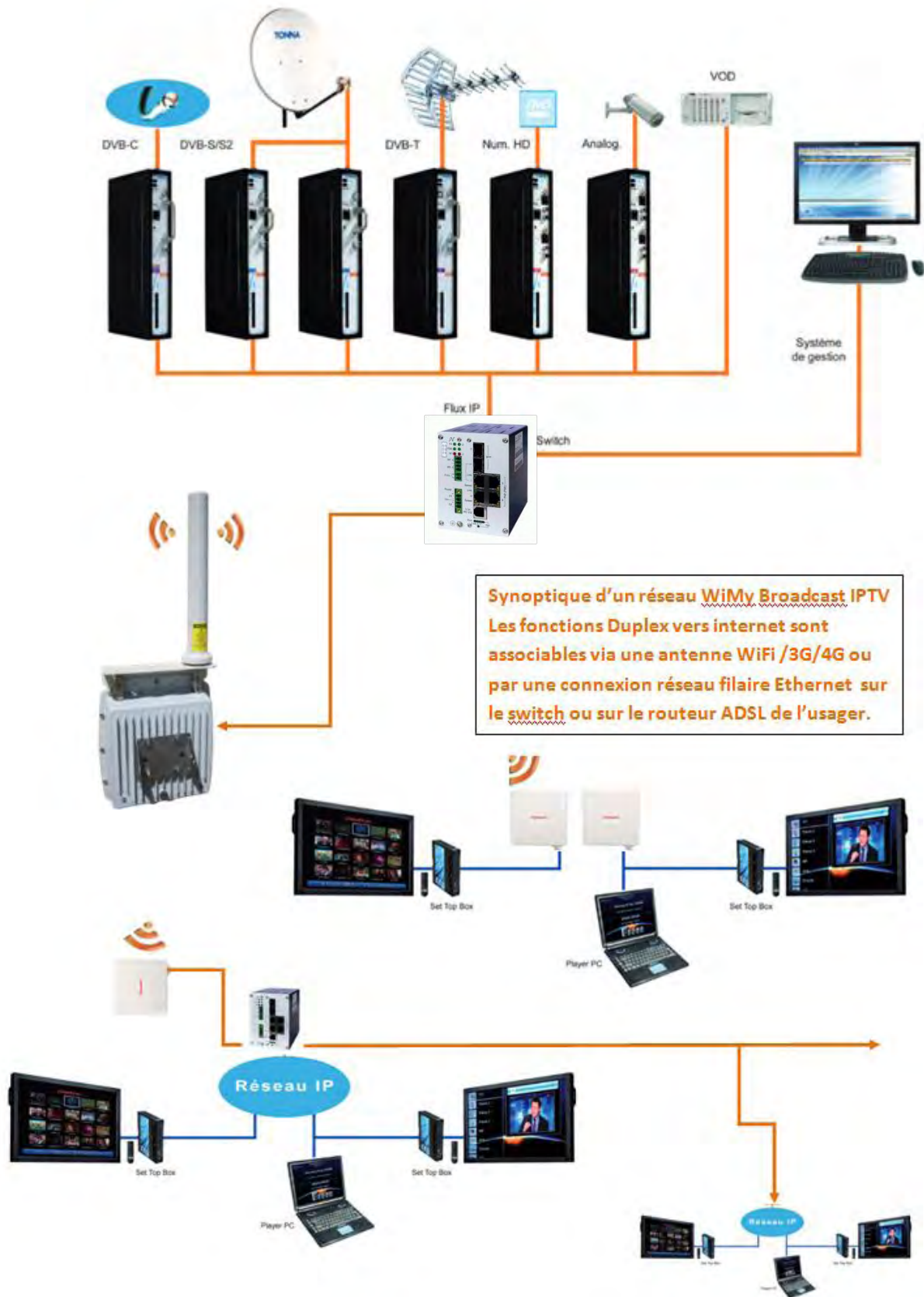


- ◆ Récepteurs DVB-T & DVB-S
- ◆ IPTV Streamers MPTS et SPTS
- ◆ Middleware
- ◆ CPE antenne
- ◆ STB Utilisateur

Cellule 1 TX avec un nombre d'utilisateurs illimités

Cellule 2 TX avec un nombre d'utilisateurs illimités

24 GHz FDD backbone utile maxi 732Mbps





SPECIFICATION :

➤ Myriaplex **WiMy** ODU IPTV Transmitter

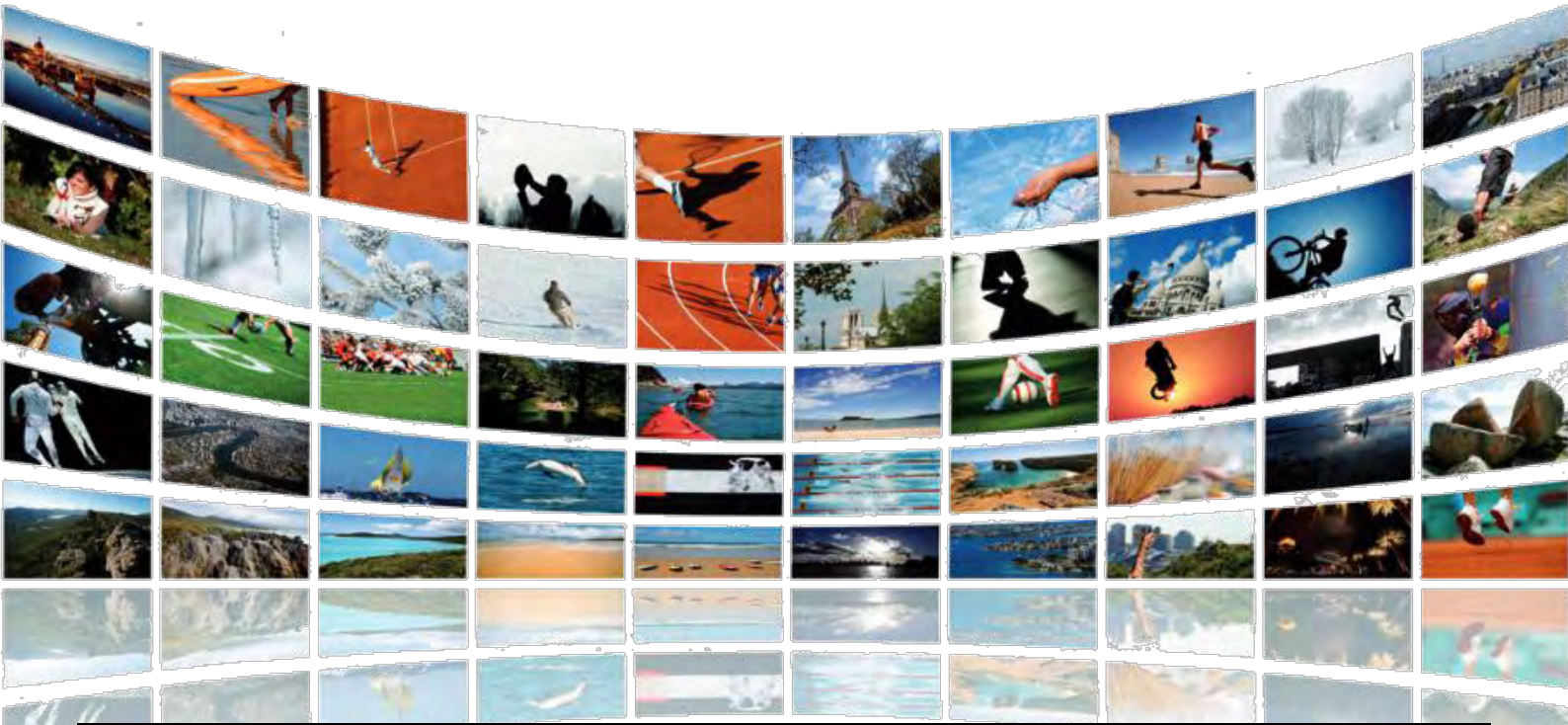
RADIO				
Frequency range	5150 – 5825 MHz			
Channel bandwidth	20 MHz / 40 MHz			
RF Output power	64 QAM3/4	64 QAM2/3	16QAM3/4	16QAM1/2 - BPSK
5150 – 5250 MHz	30.0 dBm	31.0 dBm	32.0 dBm	35.0 dBm
5250 – 5350 MHz	30.0 dBm	31.0 dBm	32.0 dBm	35.0 dBm
5470 – 5725 MHz	30.0 dBm	31.0 dBm	32.0 dBm	35.0 dBm
5725 – 5825 MHz	30.0 dBm	31.0 dBm	32.0 dBm	35.0 dBm
Multicast UDP Bandwidth	Modulation	(Mbps) @ 20 MHz		(Mbps) @ 40 MHz
	64QAM 3/4	42		68
	64QAM 2/3	38		64
	16QAM 3/4	30		57
	16QAM 1/2	21		41.5
	QPSK 3/4	16		32
	QPSK 1/2	11		21.5
	BPSK 3/4	8		16.5
	BPSK 1/2	5.6		11
Packets Error Rate	64QAM 3/4	64QAM2/3	16QAM3/4	16QAM1/2 - BPSK
	@ 20 MHz	< 60ppm	< 20ppm	< 1ppm
	@ 40 MHz	< 100ppm	< 20ppm	< 1ppm
System sensitivity @ PER 3% UDP 1470 byte datagrams	Modulation	@ 20 MHz		@ 40 MHz
	64QAM 3/4	-64 dBm		
	64QAM 2/3	-67 dBm		
	16QAM 3/4	-72 dBm		
	16QAM 1/2	-73 dBm		
	QPSK 3/4	-74 dBm		
	QPSK 1/2	-76 dBm		
	BPSK 3/4	-82 dBm		
	BPSK 1/2	-82 dBm		
INTERFACE				
RF	N-Jack			
Ethernet	IEEE 802.3 (10 Base-T) / IEEE 802.3u (100 Base-Tx)			
OTHERS				
Management and setup	Web-based configuration			
SNMP Agents	MIB II			
Data Encryption	WEP-128 bits / AES-256 bits			
Power supply	AC 100 – 264 V, 50-60 Hz, DC 48V			
Power consumption	55Watts			



WiMy MVDS IPTV Transmitter with 10 dBi omnidirectional antenna. Sectorial 15-18-21 dB antenna system on request

SPECIFICATION :

Myriplex **WiMy** ODU CPE MVDS IPTV Receiver



Sensitivity @ PER 3%	64QAM 3/4	64QAM 2/3	16QAM 3/4	16QAM1/2	QPSK 3/4	QPSK 1/2	BPSK 3/4	BPSK 1/2
UDP 1470 byte datagrams	-64 dBm	-67 dBm	-72 dBm	-73 dBm	-74 dBm	-76 dBm	- 82 dBm	- 82 dBm

Frequency stability of Radio (error rate):

Packets Error Rate	64QAM 3/4	64QAM2/3	16QAM3/4	16QAM1/2 - BPSK
@ 20 MHz	< 60ppm	< 20ppm	< 1ppm	< 1ppm
@ 40 MHz	< 100ppm	< 20ppm	< 1ppm	< 1ppm



*CPE WiMy HD
IPTV 18 dB antenna*



*STB WiMy HD IPTV decoder
& the remote control*